

Rusty Rail

Craftsman Kits and castings in HO and O Scale

Paint/Assembly Instructions for HO Feed Store

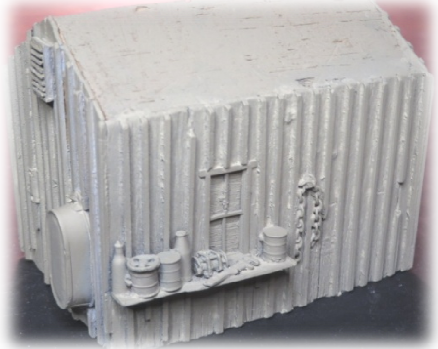
Hi everyone thanks for purchasing our repair shed. First we will start with my simple method to paint the castings to look like wood. I myself always print the main castings before assembly. I **NEVER** wash my castings before I paint them. I use a good primer you pay a few bucks more but the cheaper primer may or may not work. I always use Rust-Oleum Camouflage paint as my primer. I always find it at Wal-Mart and I use the Khaki or Sand color those give you a great base color and it sticks every time. Just make sure not to cover your detail.

After the primer is dry I use a Doctor Bens product called Grimy Dusty Buff for my base coat if it is going to be wood. Doctor Ben's products have been around for a long time and are great. Make sure you stir the product well. Put on a good coat it may not look like it is covering but when it dries you will see the results. Then I would paint any detail molded into the model like tools or brooms and chains etc. Also I only use Acrylic paints only Cream coat is the brand name but any will do.

OK after that dries you then start using an Indian ink mixture as a wash. This is made by mixing real Indian ink and Denatured Alcohol. You can get the real Indian ink at a craft store and the denatured Alcohol at a Lowes store in the paint department. Making your mix you have to play with it to get the correct combo. You do not want it too dark. Just try light coats to get the effect you want. When you apply the wash it goes into all the nooks and crannies and brings out the detail.

You will be amazed with the results and can then experiment with different techniques like dry brushing, using chalks and rub and buff products. I even mix chalks with water and get some wild results.

As far as painting the roof which is three separate pieces I just used flat black on both sides. The shop base I used the wood painting method on the wooden base floorboards and then dirty it up with powers and real dirt and made oil stains in the floor. I have been in old wooden shops buildings with wood floors and you can still smell the oil in the wood after many years.



Let's first start with the feed store assembly. In my example I painted the feed store main building just using a flat white primer paint. Then I used a dirty wash from the bottom of my tub I clean my paint brushes in or you can use the Indian ink mixture mentioned above on the exterior of the feed store. Then I used a green color for the trim. You will find two pieces of cast corrugated roof pieces that you super glue to the roof of the feed store. The wood trim on the roof pieces fit to the rear of the roof. Next find the strip of silver tape and cut it the correct length and the width to cover the gap where the roof sections meet. You can then paint and rust the tin roof. Add the canopy to the front of the store it fits on the ledge above the windows. Once it is glued in place at the angle you want find the two wood pieces and cut and fit them as the porch supports. Then paint and weather the detail attached to the side of the feed store. The last touch is to add the included store signage or your own to the exterior walls of the store.



Ok next we will assemble the attached shop. Find your three walls and the floor. First get those pieces and the detail painted. You can use the method above or use what works for you. Check the fit on the walls pieces to make sure the fit is good use the example picture at the right. If all fits well super glue the three walls to the floor. Check your shops fit to the side of the feed store. When correct glue the shop to the feed store. Paint your roof that is cast as a tarpaper roof. A lot of details to paint on the outside of the shop and you can add signage if you wish. Also included a gas pump you can add to the model it is up to you. Also the other castings you received can be placed where you want. Then you can use your own weathering skills to finish it up and add more detail to the inside and out.



Last item is the bonus car. You will find the four tires to super glue to the cars wheel wells. I painted the car windows a light gray then the body a flay black. Highlighted the chrome parts like the cars bumpers etc. Then coated the car with a good coat of dust. Since it is dirt roads a car would not be all new and shiny.



Then place it and add the scenery that works for you and you will have a great little scene with some great detail.

Also if you have suggestions on the instructions that may help others please let me know.

Rick -Rusty Rail

